



ATRIO

THE HEART OF BOGOTA

IN DETAIL



# Floor by floor

## North Tower

### Office Floor 1 – 40

Office Floor 40	744 sq m
Office Floor 39	862 sq m
Office Floor 38	946 sq m
Office Floor 37	1,023 sq m
Office Floor 36	1,033 sq m
Office Floor 35	1,483 sq m
Office Floor 34	1,535 sq m
Office Floor 33	1,610 sq m
Office Floor 32	1,778 sq m
Office Floor 31	1,869 sq m
Office Floor 30	1,952 sq m
Office Floor 29	2,015 sq m
Office Floor 28	2,080 sq m
Office Floor 27	2,170 sq m
Office Floor 26	2,132 sq m
Amenity Floor 25	2,126 sq m
Technical Floor 24	2,162 sq m
Office Floor 23	2,162 sq m
Office Floor 22	2,134 sq m
Office Floor 21	2,134 sq m
Office Floor 20	2,134 sq m
Office Floor 19	2,162 sq m
Office Floor 18	2,164 sq m
Office Floor 17	2,164 sq m
Office Floor 16	2,164 sq m
Office Floor 15	2,164 sq m
Office Floor 14	2,136 sq m
Office Floor 13	2,135 sq m
Office Floor 12	2,136 sq m
Office Floor 11	2,136 sq m
Office Floor 10	2,137 sq m
Office Floor 9	2,137 sq m
Office Floor 8	2,137 sq m
Office Floor 7	2,000 sq m
Office Floor 6	1,997 sq m
Services Floor 5	1,635 sq m
Services Floor 4	1,683 sq m
Services Floor 3	1,089 sq m
Services Floor 2	1,148 sq m
Office Lobby	1,315 sq m

- Office
- Amenities & Retail
- Technical

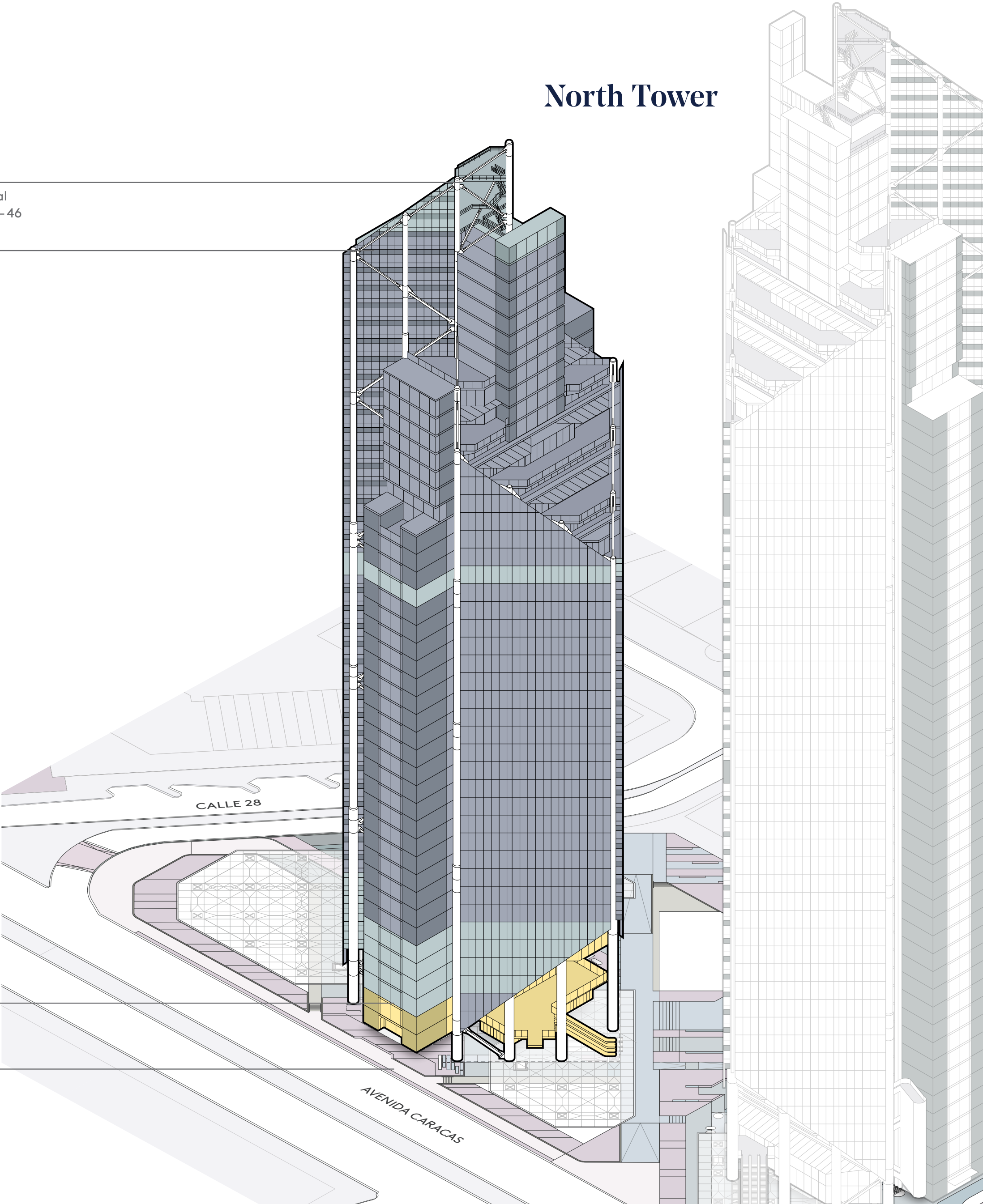
### Retail & Restaurant Floor 0 – 1

Retail & Restaurant	3,463 sq m
---------------------	------------

### Parking

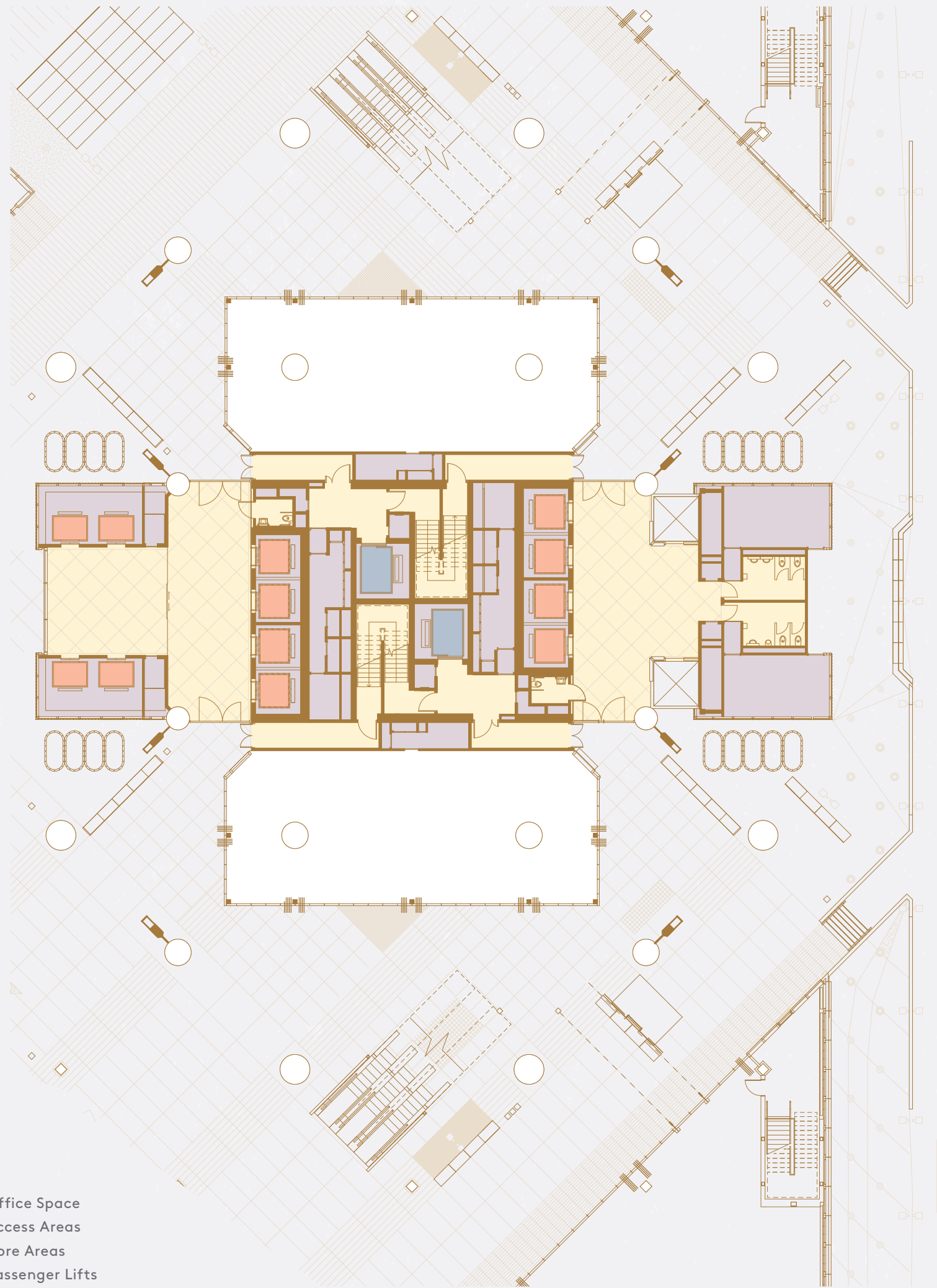
Parking	40,199 sq m
---------	-------------

### Technical Floor 41 – 46



# Ground Floor Low Rise

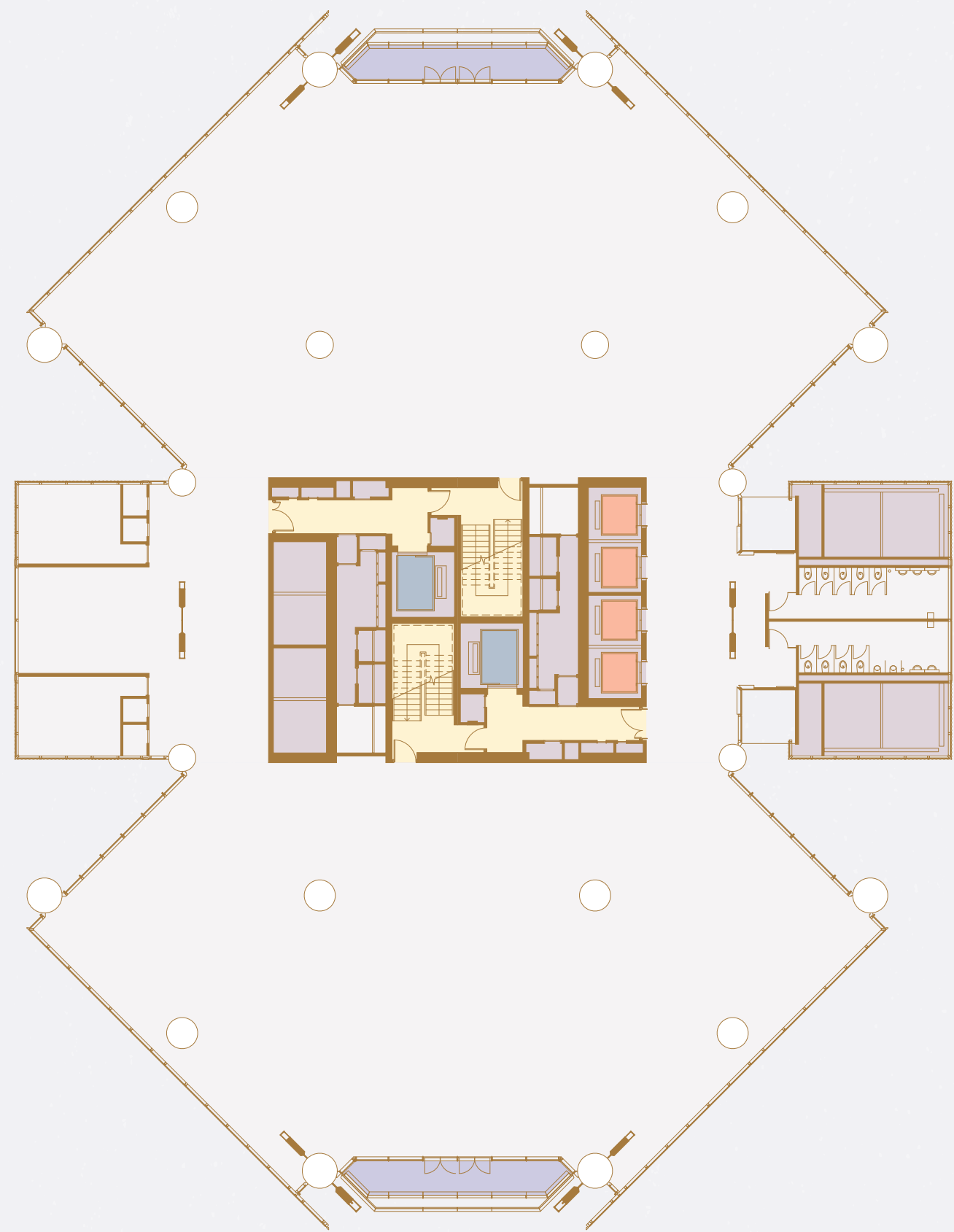
1,315 SQ M



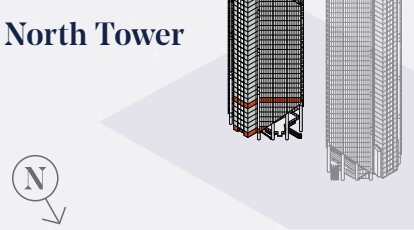
- Office Space
- Access Areas
- Core Areas
- Passenger Lifts
- Goods Lift / Fire Lift
- Balcony

# Floor 06 Low Rise

1,997 SQ M

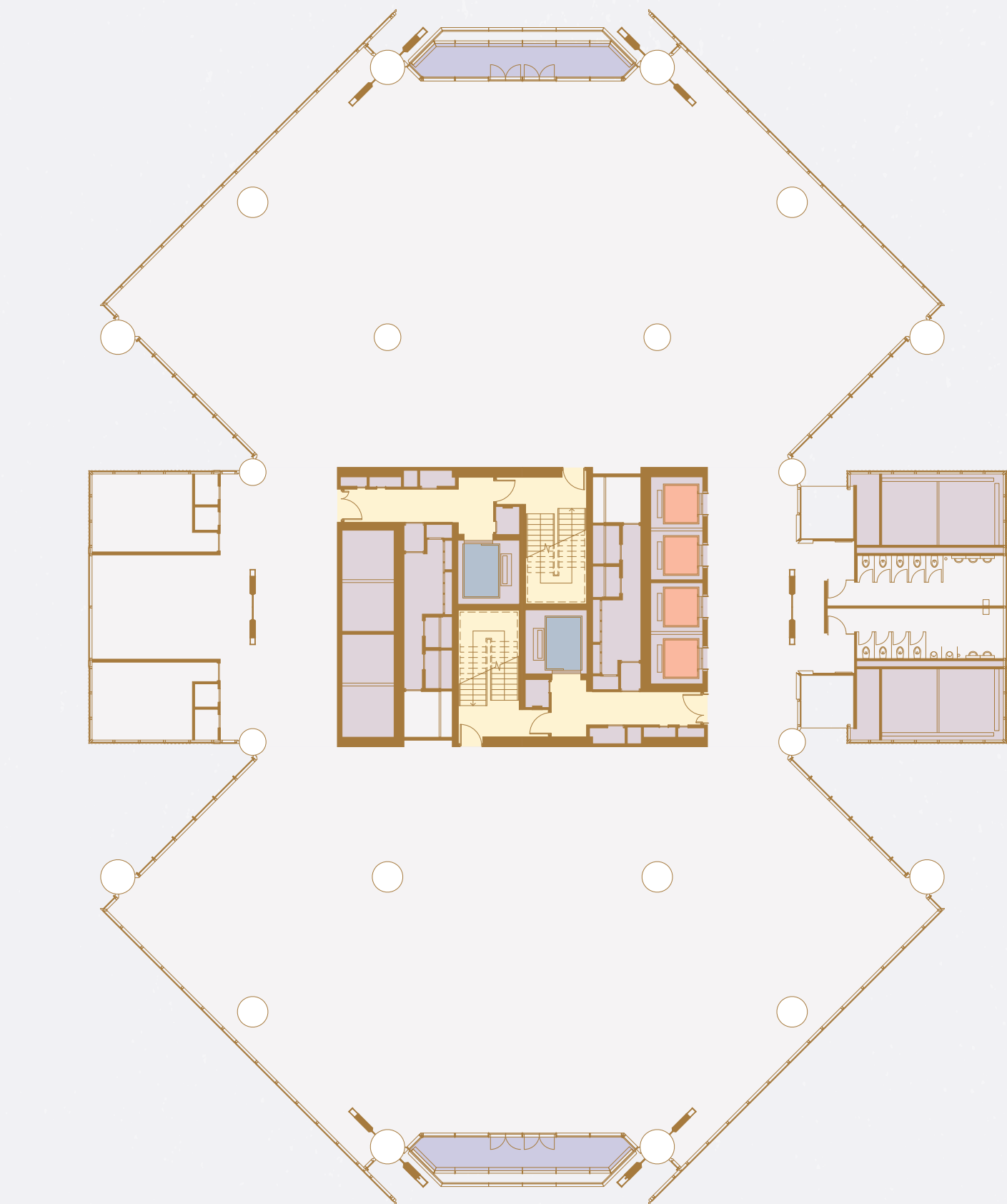


- Office Space
- Access Areas
- Core Areas
- Passenger Lifts
- Goods Lift / Fire Lift
- Balcony



# Floor 07 Low Rise

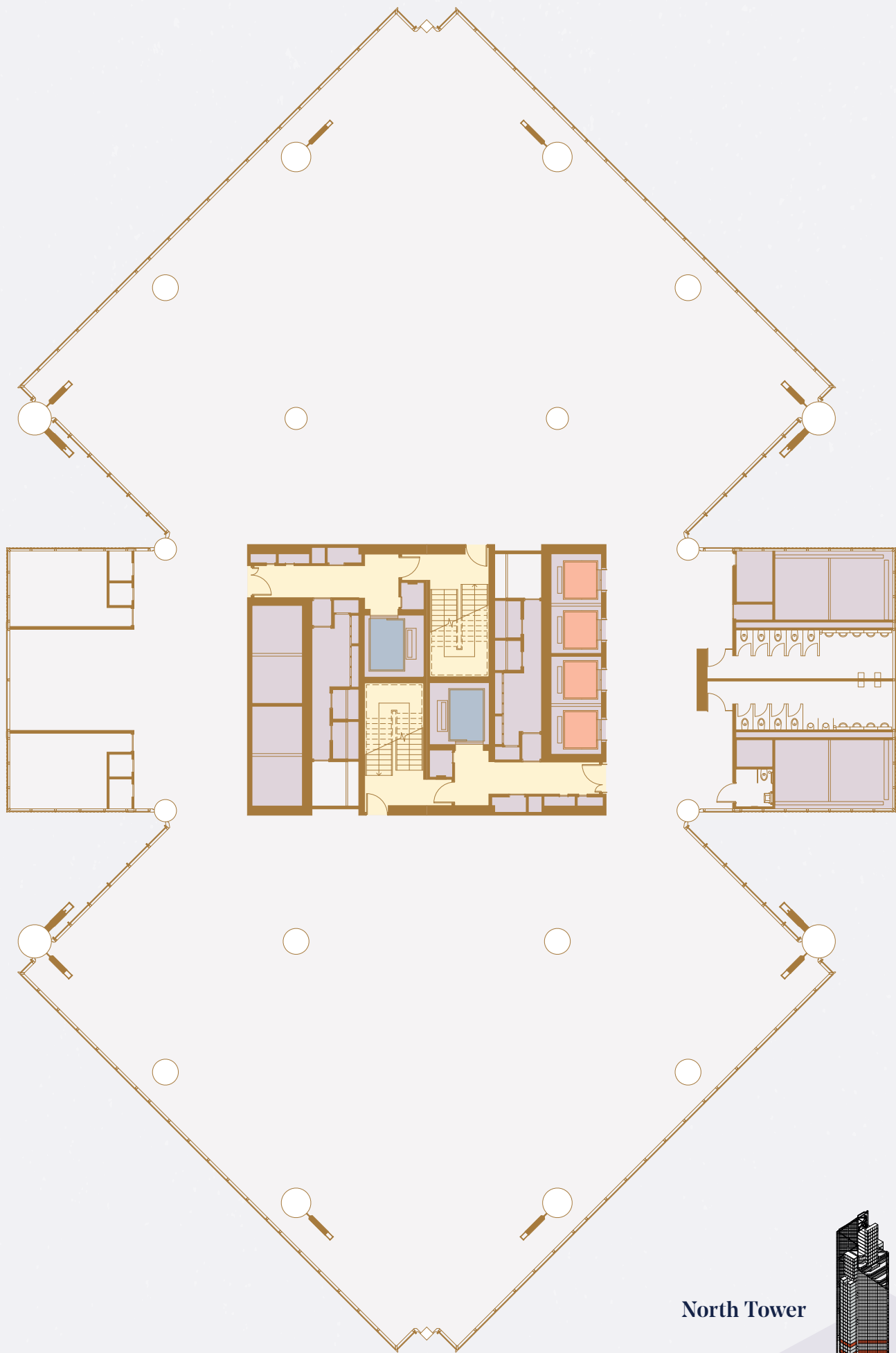
2,000 SQ M



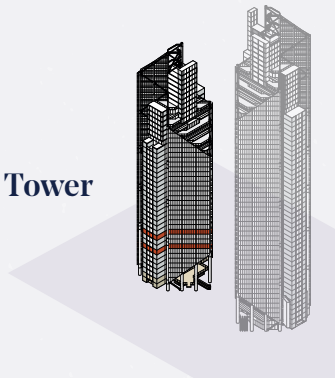
- Office Space
- Access Areas
- Core Areas
- Passenger Lifts
- Goods Lift / Fire Lift
- Balcony

# Floor 10 Low Rise

2,137 SQ M

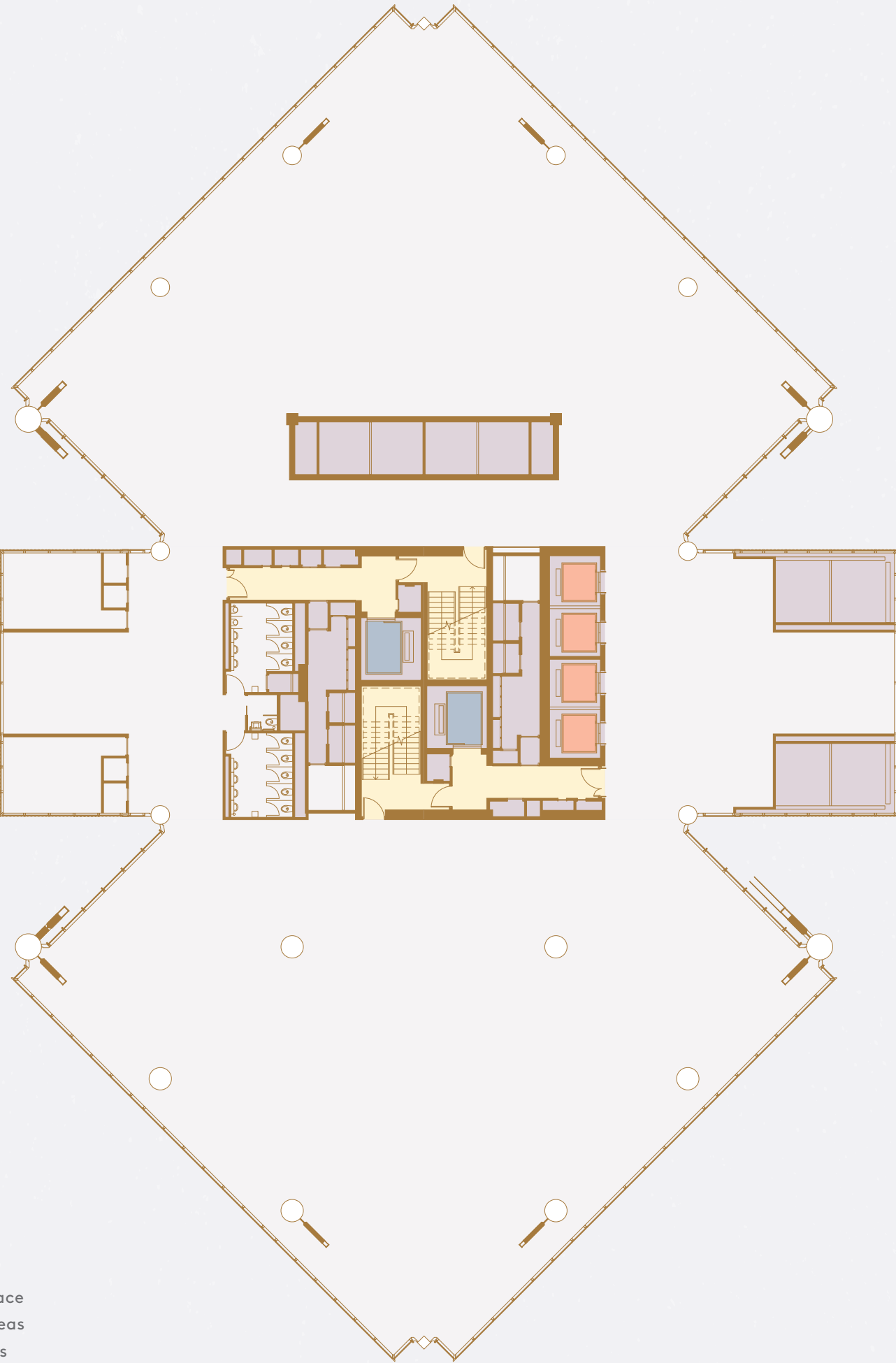


North Tower



# Floor 26 Mid Rise

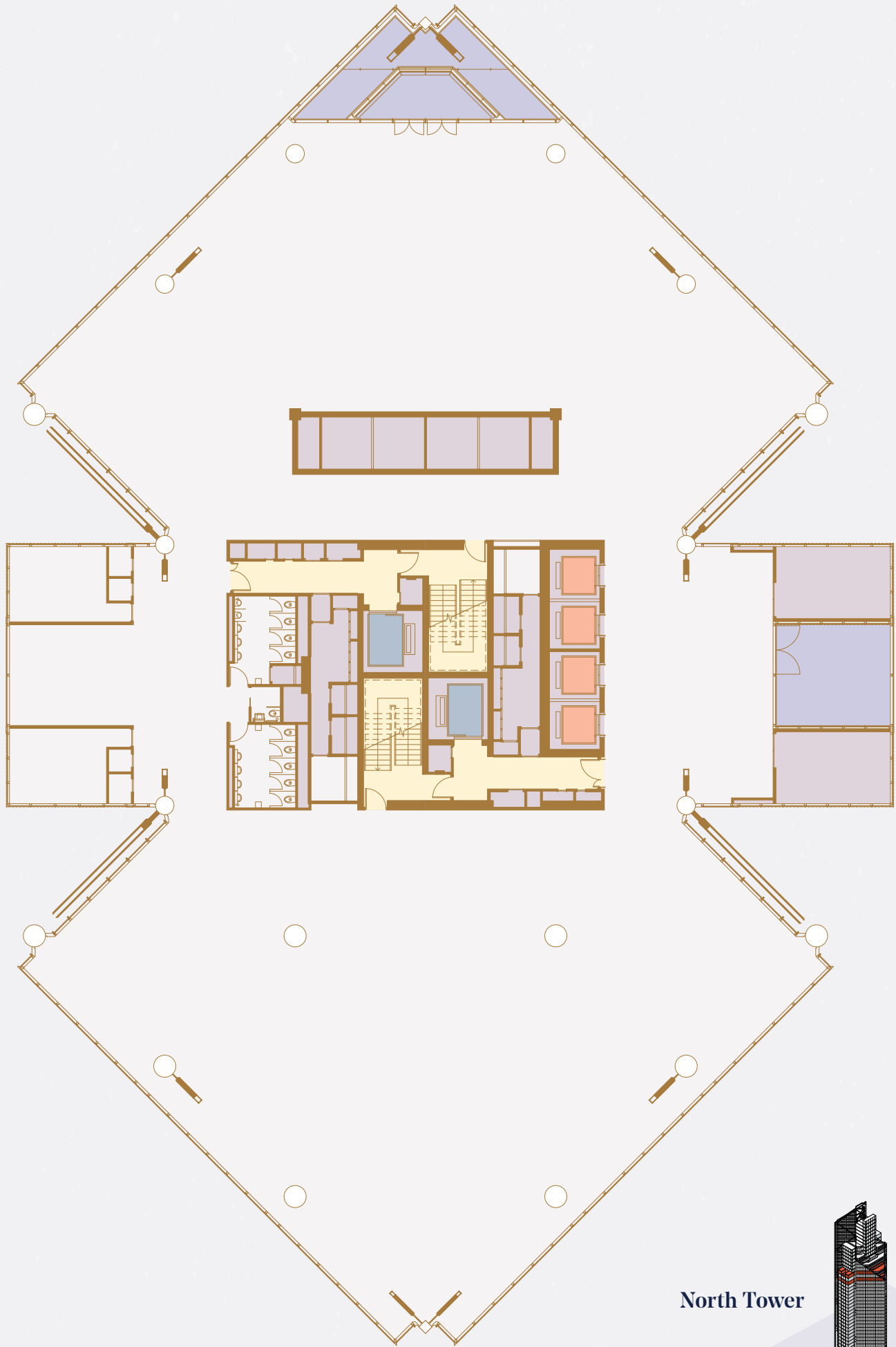
2,132 SQ M



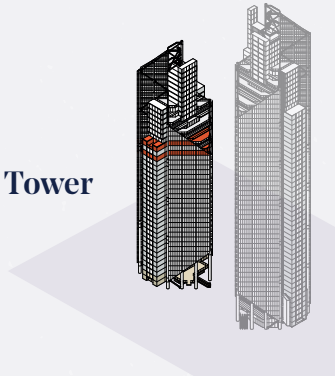
- Office Space
- Access Areas
- Core Areas
- Passenger Lifts
- Goods Lift / Fire Lift
- Balcony

# Floor 28 Mid Rise

2,080 SQ M



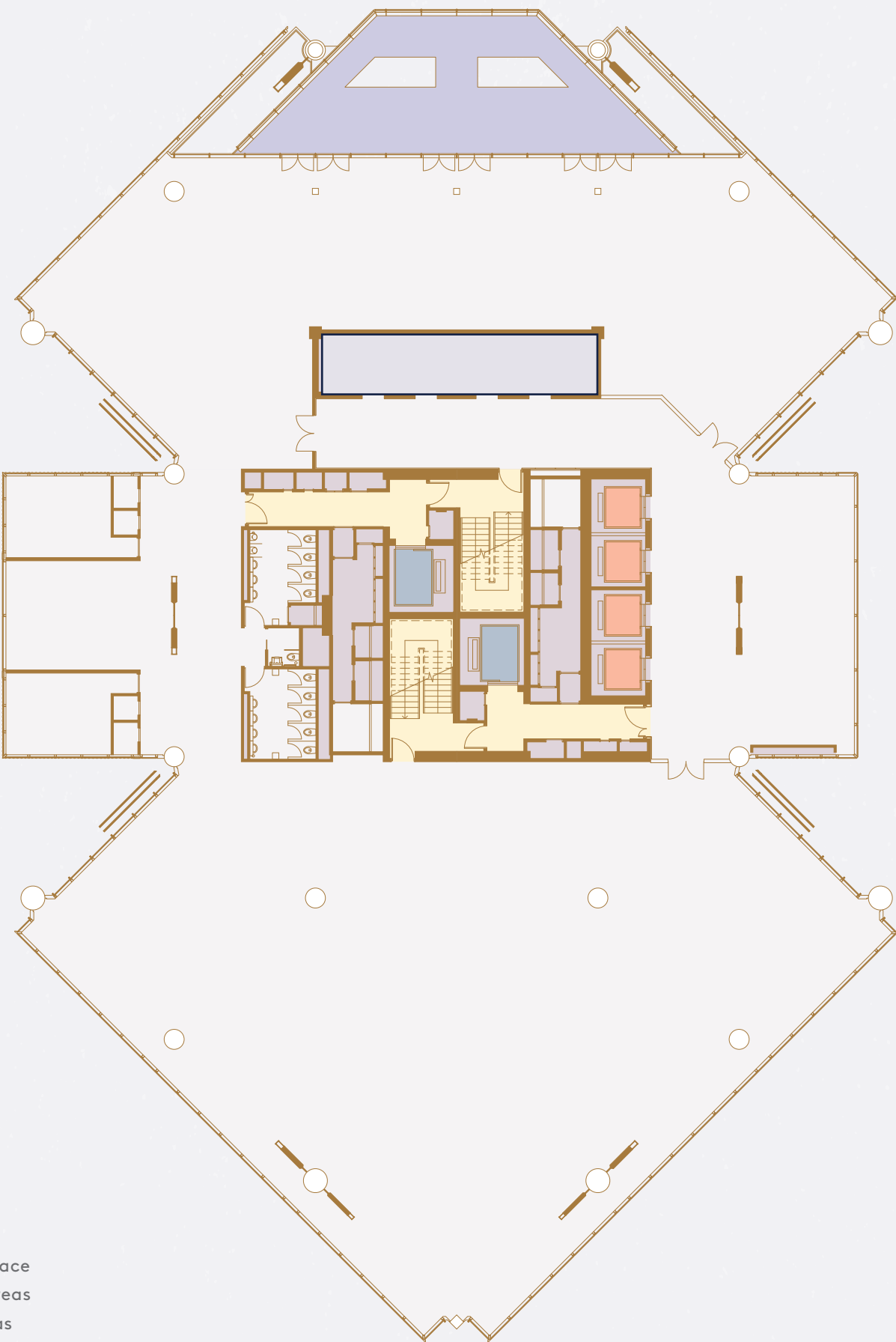
North Tower





# Floor 30 High Rise

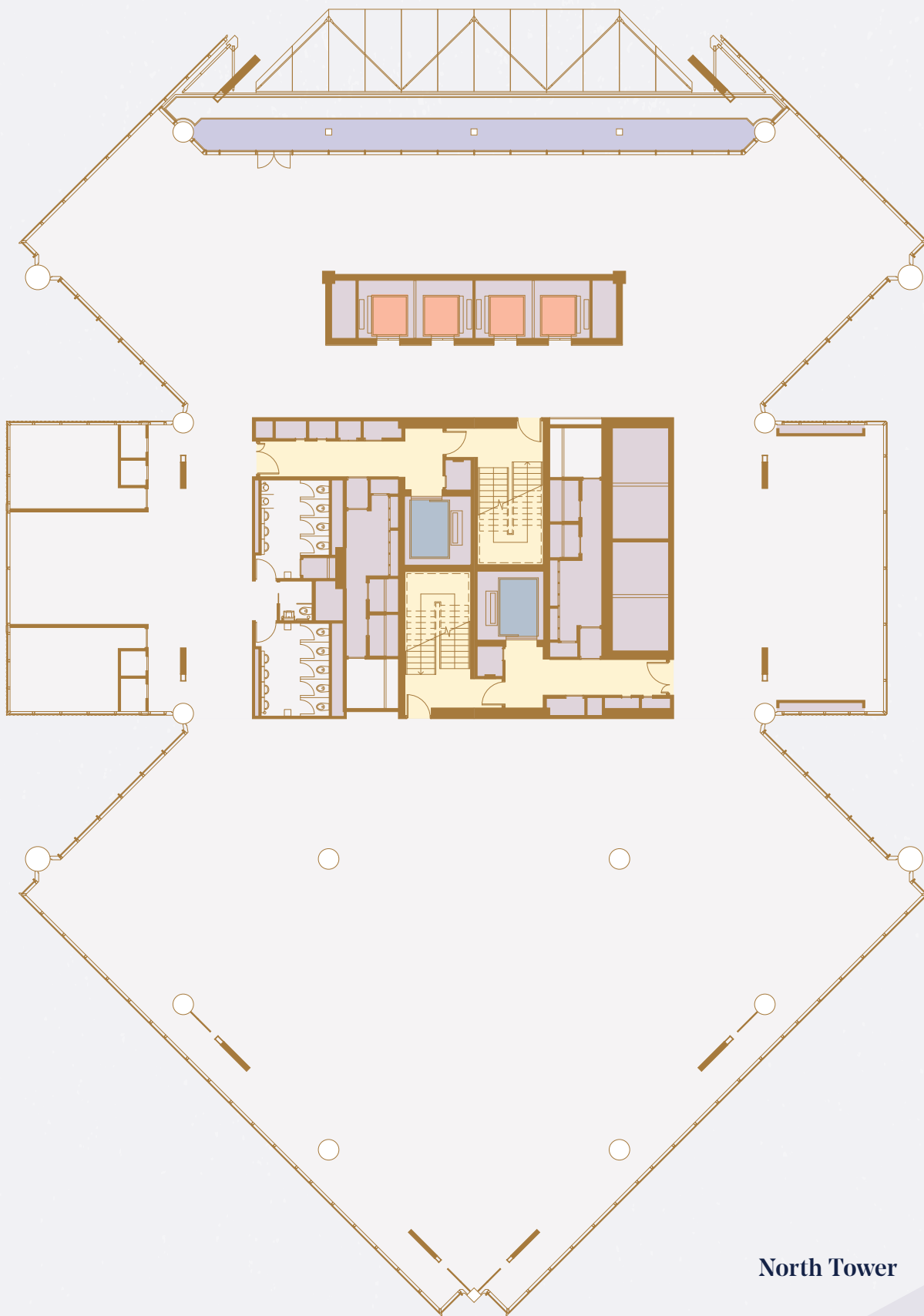
1,952 SQ M



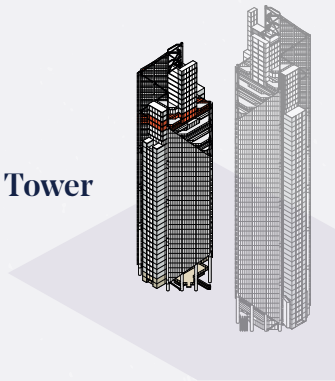
- Office Space
- Access Areas
- Core Areas
- Passenger Lifts
- Goods Lift / Fire Lift
- Balcony

# Floor 31 High Rise

1,869 SQ M

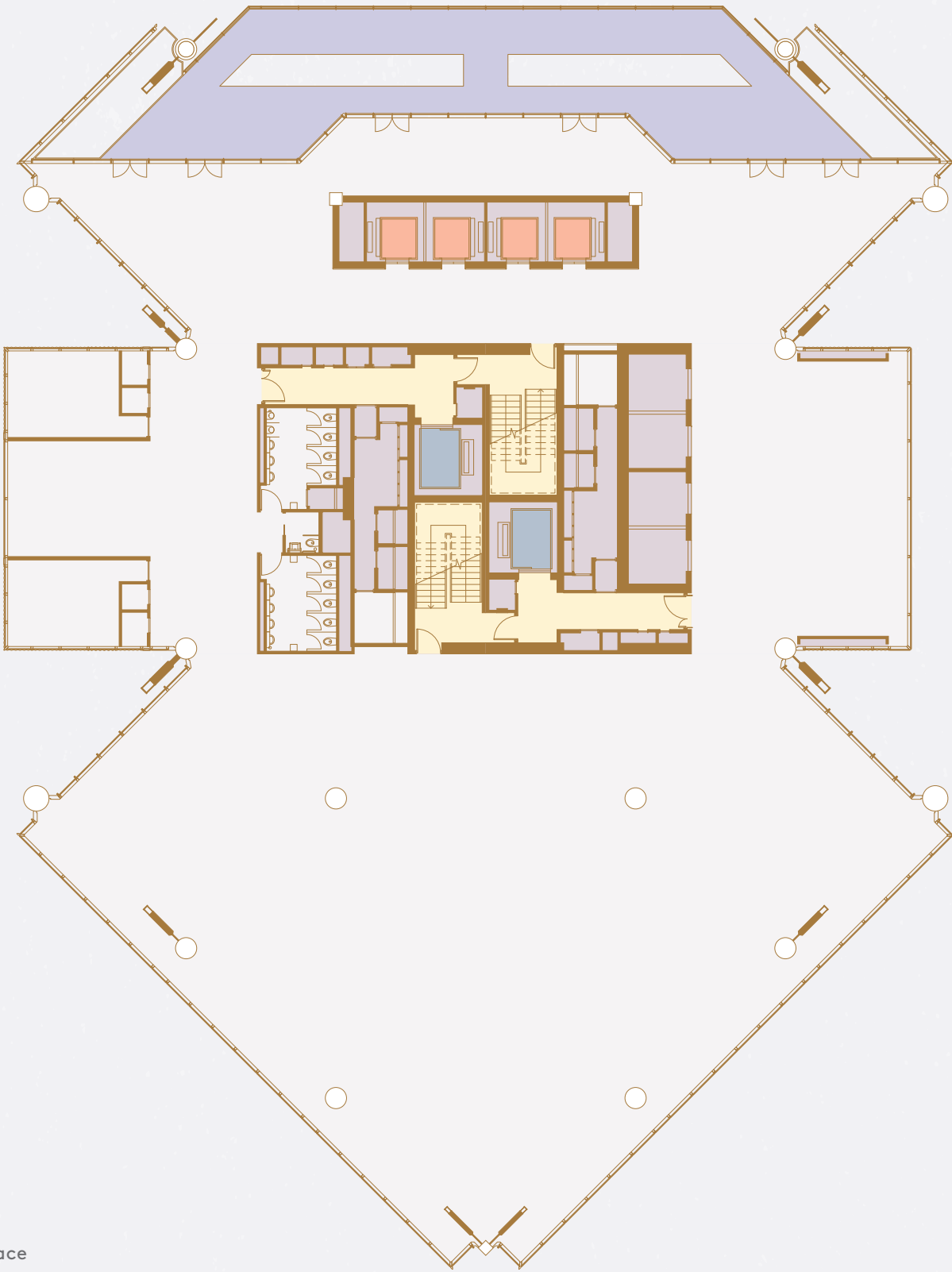


North Tower



# Floor 32 High Rise

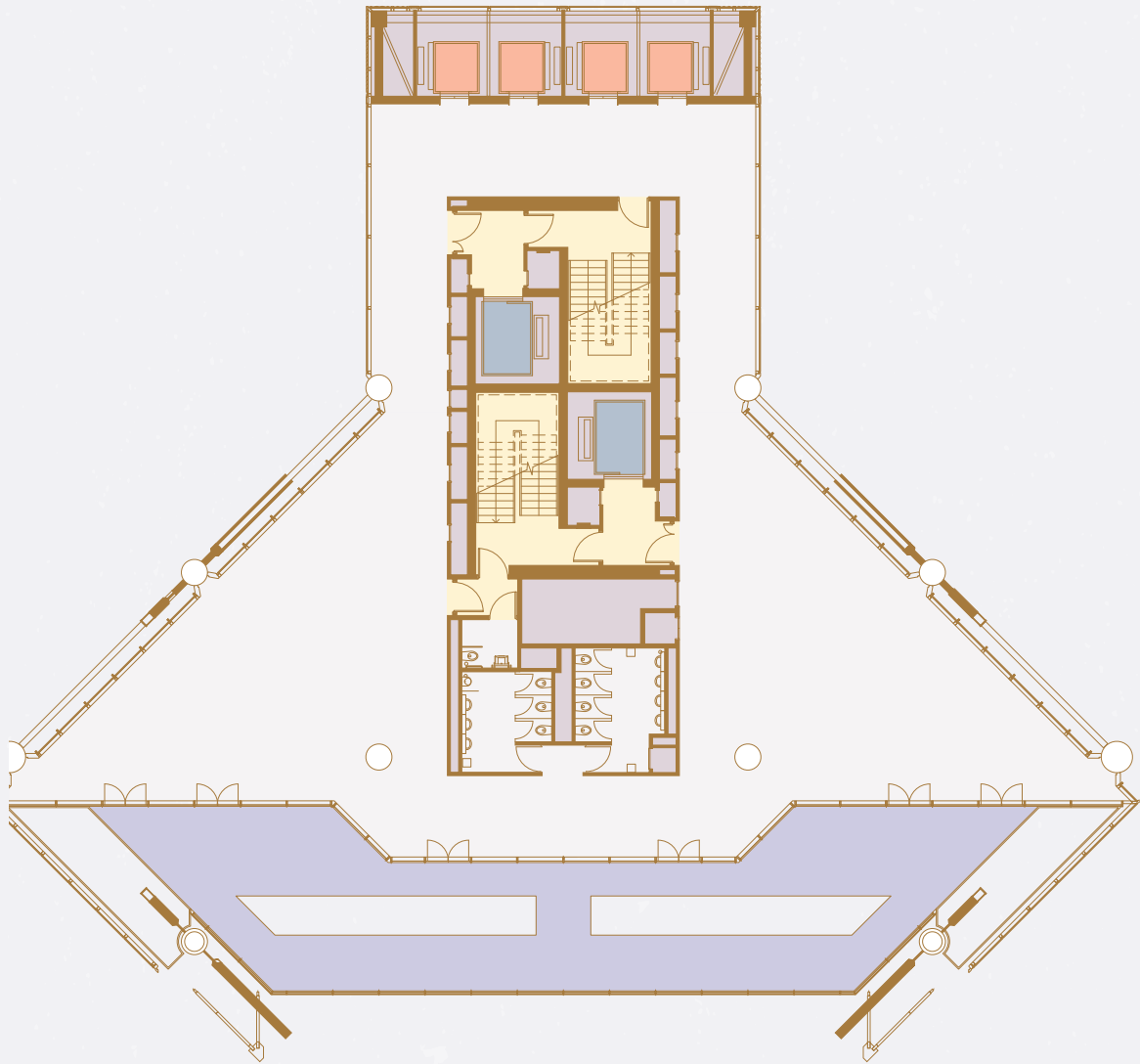
1,778 SQ M



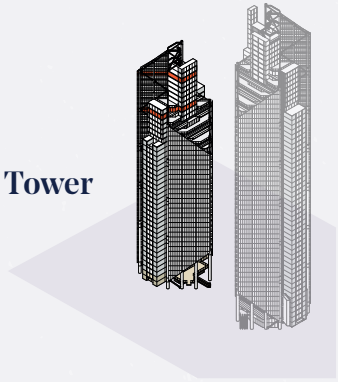
- Office Space
- Access Areas
- Core Areas
- Passenger Lifts
- Goods Lift / Fire Lift
- Balcony

# Floor 40 High Rise

744 SQ M

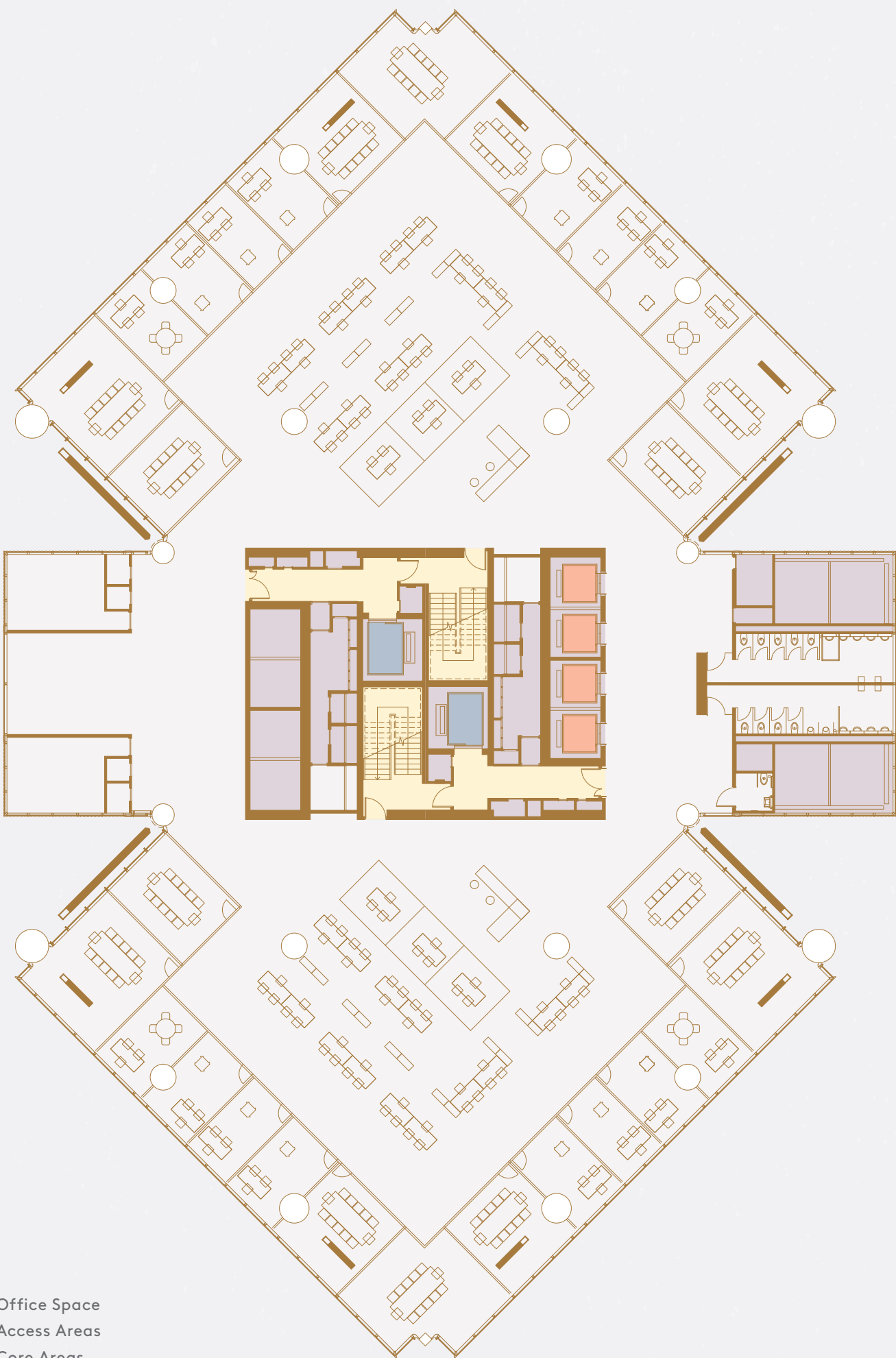


North Tower



# Spaceplan 1

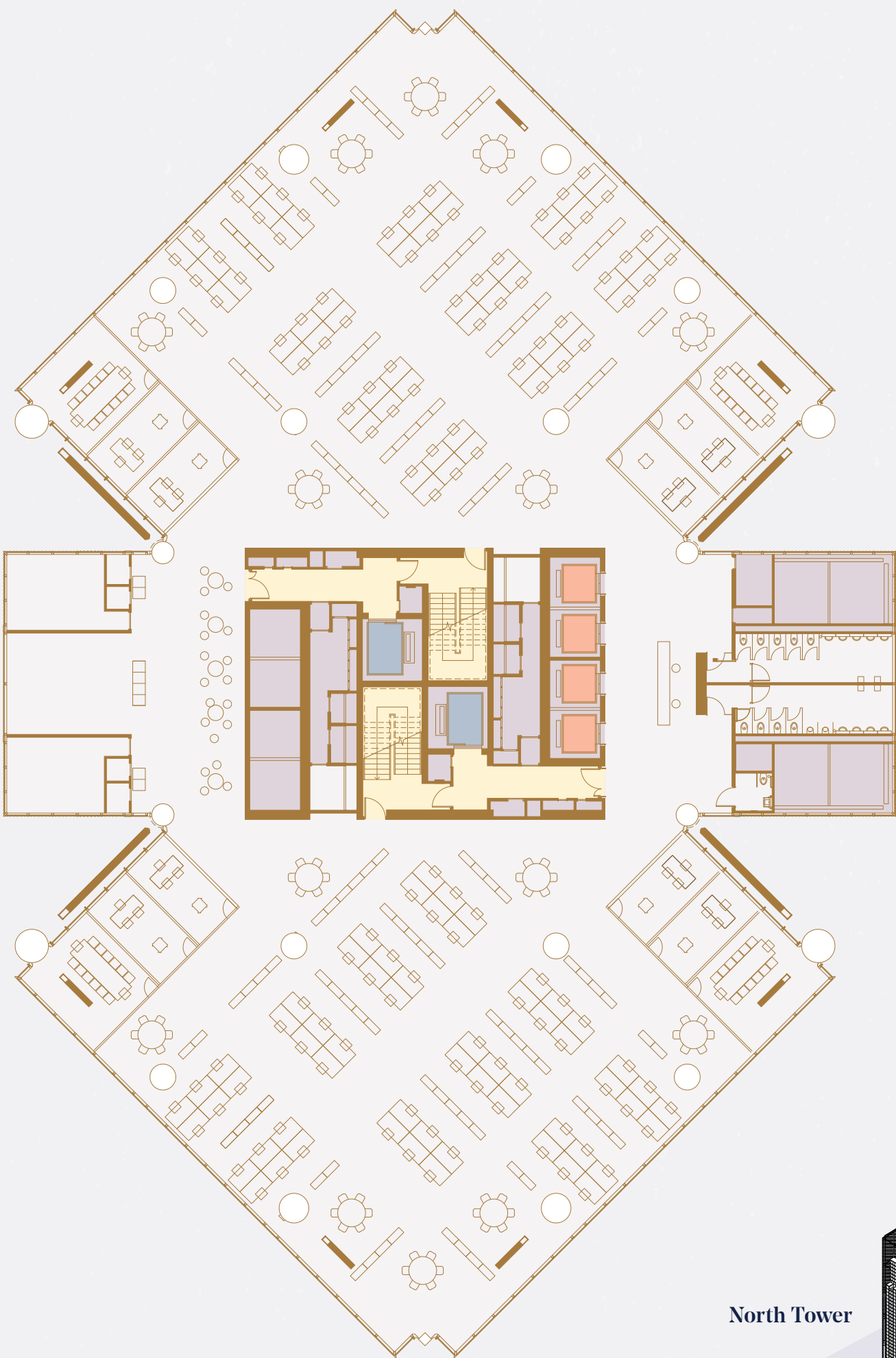
Typical plan of approx. 2,100 sq m  
Occupancy capacity of more than 200 employees per floor



- Office Space
- Access Areas
- Core Areas
- Passenger Lifts
- Goods Lift / Fire Lift
- Balcony

# Spaceplan 2

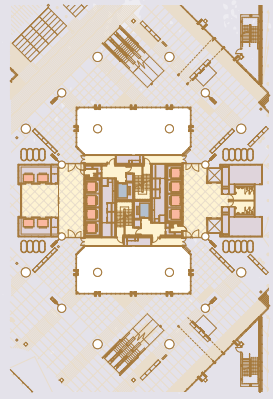
Typical plan of approx. 2,100 sq m  
Occupancy capacity of more than 200 employees per floor



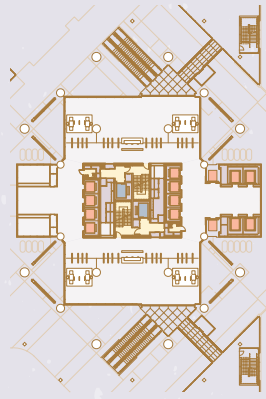
North Tower







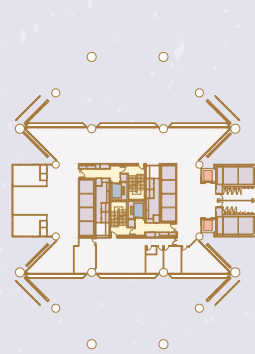
Floor 00



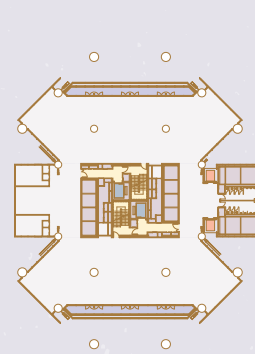
Floor 01 OFFICE LOBBY



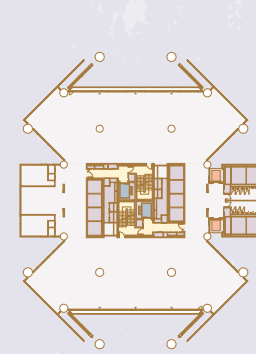
Floor 02 SERVICES 1,148 SQ M



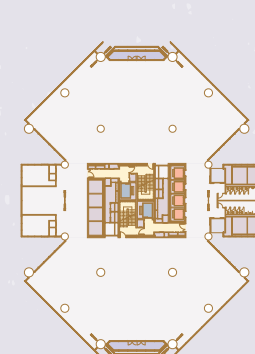
Floor 03 SERVICES 1,089 SQ M



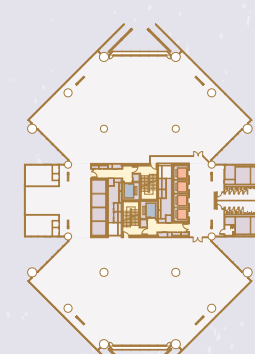
Floor 04 SERVICES 1,683 SQ M



Floor 05 SERVICES 1,635 SQ M



Floor 06 1,997 SQ M



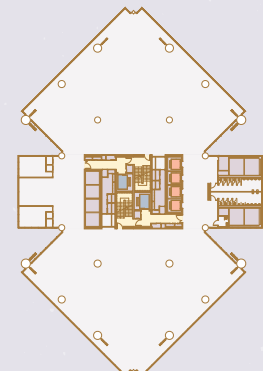
Floor 07 2,000 SQ M



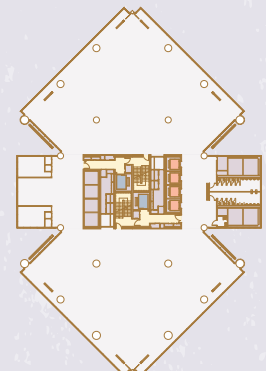
Floor 08 2,137 SQ M



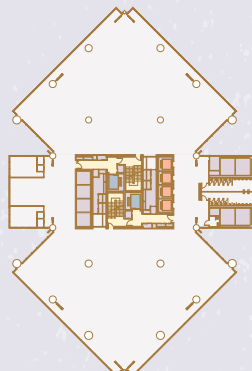
Floor 09 2,137 SQ M



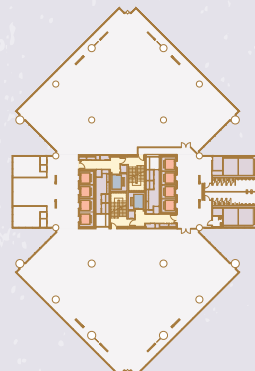
Floor 10 2,137 SQ M



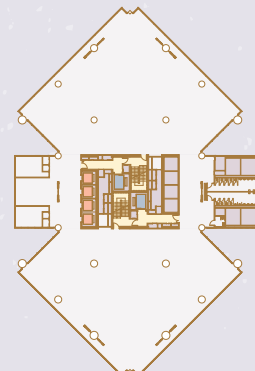
Floor 11 2,136 SQ M



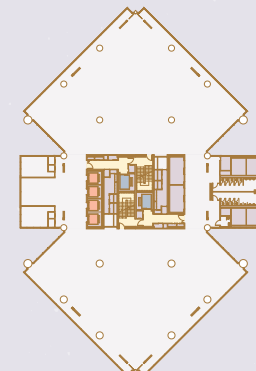
Floor 12 2,136 SQ M



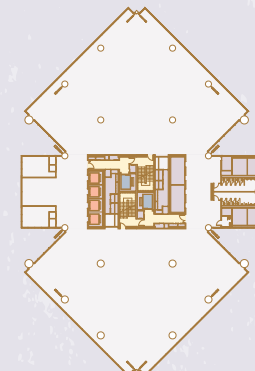
Floor 13 2,135 SQ M



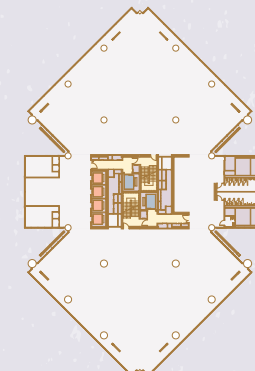
Floor 14 2,136 SQ M



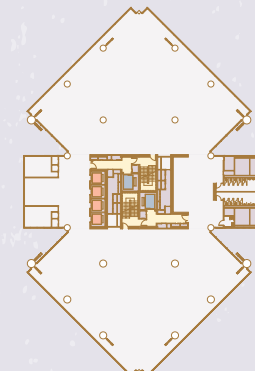
Floor 15 2,164 SQ M



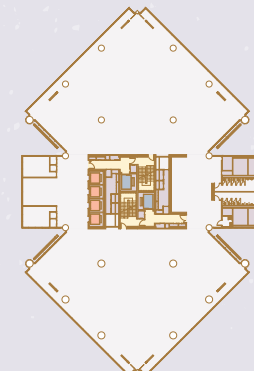
Floor 16 2,164 SQ M



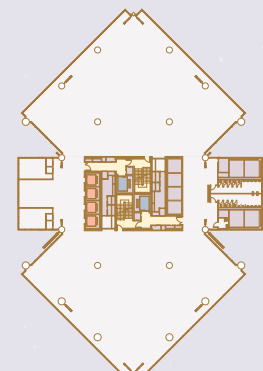
Floor 17 2,164 SQ M



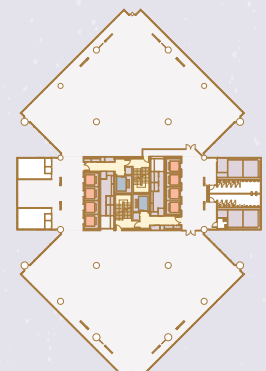
Floor 18 2,164 SQ M



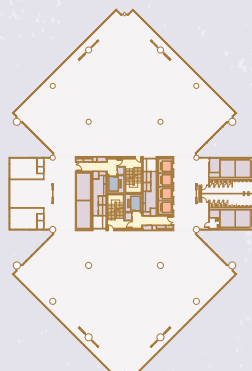
Floor 19 2,162 SQ M



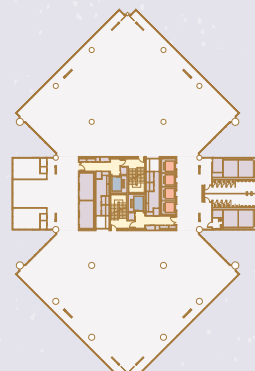
Floor 20 2,134 SQ M



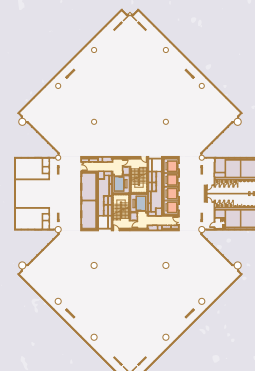
Floor 21 2,134 SQ M



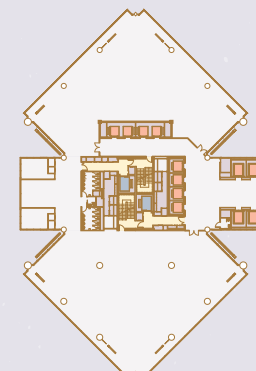
Floor 22 2,134 SQ M



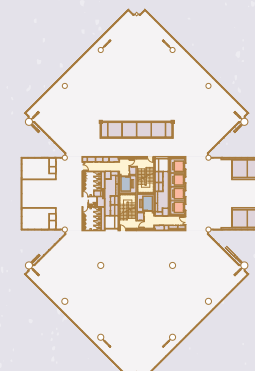
Floor 23 2,162 SQ M



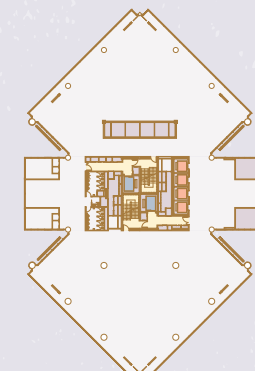
Floor 24 TECHNICAL 2,162 SQ M



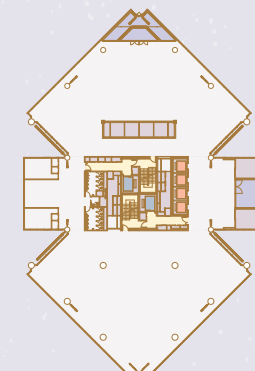
Floor 25 AMENITY 2,126 SQ M



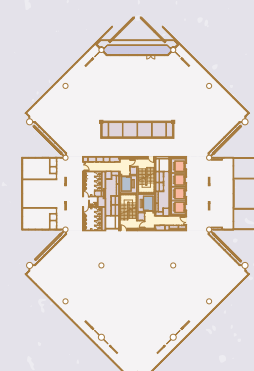
Floor 26 2,132 SQ M



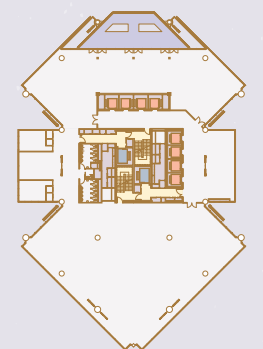
Floor 27 2,170 SQ M



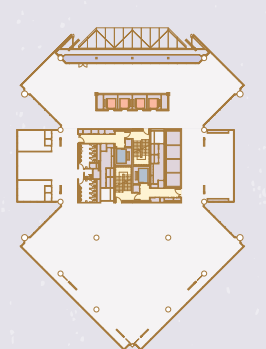
Floor 28 2,080 SQ M



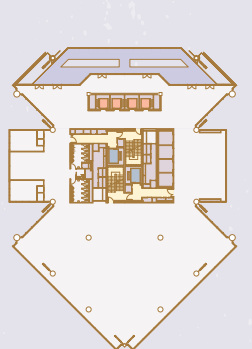
Floor 29 2,015 SQ M



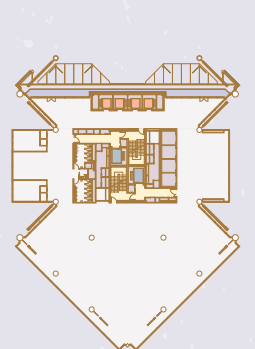
Floor 30 1,952 SQ M



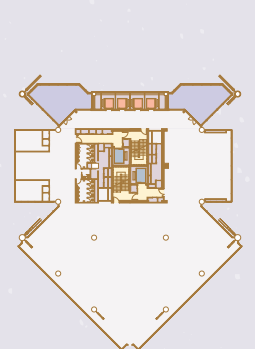
Floor 31 1,869 SQ M



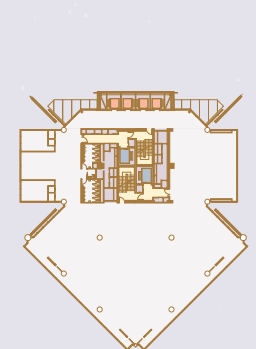
Floor 32 1,778 SQ M



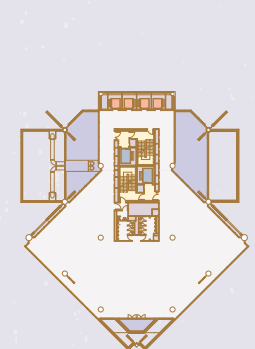
Floor 33 1,610 SQ M



Floor 34 1,535 SQ M



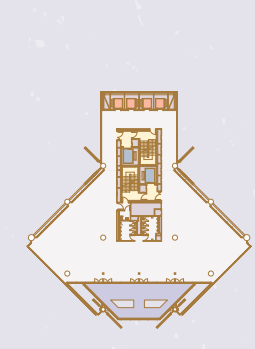
Floor 35 1,483 SQ M



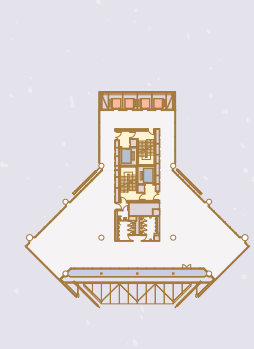
Floor 36 1,033 SQ M



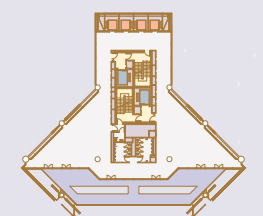
Floor 37 1,023 SQ M



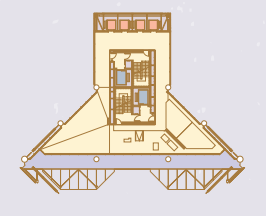
Floor 38 946 SQ M



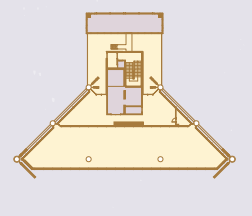
Floor 39 862 SQ M



Floor 40 744 SQ M



Floor 41 TECHNICAL



Floor 42 TECHNICAL



Please get in touch for the latest  
exciting opportunities at Atrio.

**QBO**

Calle 93A No. 13-24,  
Piso 7,  
Bogota  
Colombia

Tel: 748 05 05

Email: [info@atrio.com.co](mailto:info@atrio.com.co)  
[atrio.com.co](http://atrio.com.co)

None of the elements contained in this material should be considered as exact, explicit, or tactical representation of the details or final finishes of the units that make up the Atrio Project and Atrio Project as such. Each and every one of the illustrations, drawings, representations, specifications, plans, diagrams, terms, conditions, dimensions, affirmations, attributes, sizes, materials, prices, graphics, angles, views, images, and artistic, architectural and design photos reproduced or described in this material, are only conceptual proposals based on preliminary plans and designs. Both the manager and the developer of the project reserve the right, without prior notice, and without requiring the approval of the tenant or buyer or third party, to make changes or adjustments to the illustrations described in this material. July 2018.

Design by [wordsearch.co.uk](http://wordsearch.co.uk)



